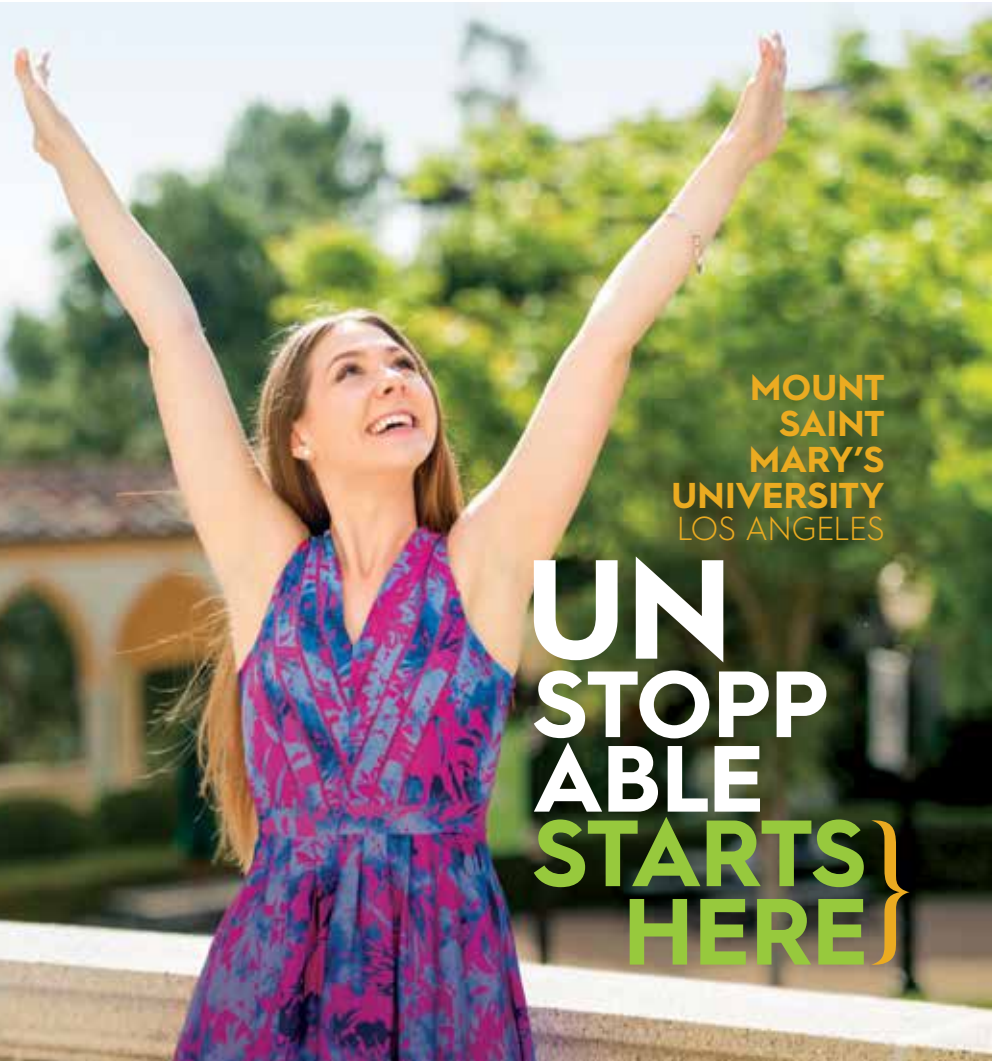


INVEST IN YOUR FUTURE

SCHOLARSHIP + FINANCIAL AID 2019-2020
TRADITIONAL UNDERGRADUATE STUDENTS

MOUNT
SAINT
MARY'S
UNIVERSITY
LOS ANGELES

UN
STOPP
ABLE
STARTS }
HERE }



A GREAT RETURN ON YOUR INVESTMENT

Mount Saint Mary's University in Los Angeles is nationally recognized for its academic programs. Focused on preparing the next generation of citizen leaders, we strive to be in the forefront of higher education initiatives for women.

No.1

"TOP PERFORMERS ON SOCIAL MOBILITY — WESTERN REGION"
U.S. News & World Report (2019)

ONE OF

"THE MOST TRANSFORMATIVE COLLEGES" NATIONWIDE
No. 2 RANKING.

MONEY Magazine's Best Colleges (2019)



AN INVITATION FROM OUR PRESIDENT

As a parent of three young women, I know firsthand that finding the right college is a very important decision. You are looking for the best academic culture in a nurturing and safe environment offering a great return on your investment.

Mount Saint Mary's is just that — and so much more. Here are just a few examples of why Mount Saint Mary's is so special.

- ▶ Our students thrive due to our rigorous academic offerings, our caring approach to student success as well as our leadership development programs and experiential learning opportunities.
- ▶ Our professors and faculty are among the best in the nation and empower students to reach their highest potential.
- ▶ Research, international study and distinctive academic programs keep students engaged.
- ▶ Los Angeles is our extended classroom and the City provides exposure to rich and diverse cultures, world renowned art institutions, large corporations and a thriving nonprofit community.

I encourage you to visit us, talk to our faculty and students, and learn about the amazing work happening on our campus. I am certain you will not only be impressed — you will feel at home. I hope to welcome you to Mount Saint Mary's soon.

Warm regards,

President



MERIT AWARDS & SCHOLARSHIPS

EVERY ADMITTED STUDENT RECEIVES A SCHOLARSHIP

- ▶ All traditional undergraduate students receive a merit scholarship of at least \$10,000. These are renewable each year.
- ▶ The Office of Admission should have your completed application and supporting documents by the dates below.

Application Deadlines for Scholarship Consideration

Le Puy Founders' Scholars Award	▶ December 1
First-years	▶ February 15
Transfers	▶ March 15 (Fall); November 1 (Spring)

Notification of Admission

Apply before December 1	▶ Notified by late January
Apply before February 15	▶ Notified by late March



QUALIFY FOR THESE SCHOLARSHIPS?

Le Puy Founders' Scholars Award: Full Tuition

Applicants with exceptional academic records who apply by December 1 are considered for this scholarship. A required additional essay is included in the Common Application.

Music Scholarships: up to Full Tuition

Music majors must audition for scholarship awards ranging up to full tuition. Non music majors may also audition to participate in MSMU ensembles and scholarship awards of various amount. Visit the Music section of our website for audition dates.

Distance Awards: \$5,000

All out-of-state residents receive this annual grant which may be combined with renewable merit scholarships.



NEED-BASED FINANCIAL AID

APPLY

Follow these steps to apply for need-based financial aid, including:

- ▶ Federal Pell Grant
- ▶ CA Dream Act
- ▶ Cal Grant (California residents only)
- ▶ MSMU Awards
- ▶ Federal Stafford Loan
- ▶ Work Study

Step 1: Submit the Free Application for Federal Student Aid (FAFSA) between October 1 and March 2 if you qualify for federal aid.

Do not wait to learn of your admission decision before you apply for financial aid!

- ▶ Complete the FAFSA at: fafsa.ed.gov
- ▶ Use the Mount's School Code: **001243**
- ▶ Keep a copy for your records.

Step 2: California Residents—Apply for a Cal Grant or the CA Dream Act by March 2.

Start a **CA Dream Act** Application at: dream.csac.ca.gov

Applying for a **Cal Grant** requires two forms: your FAFSA (see STEP 1) and a GPA Verification Form.

▶ Download a Cal Grant GPA Verification Form at: csac.ca.gov

▶ Forms are also available from your high school counselor or our Financial Aid Office.

▶ Give the completed form to your high school counselor to **submit no later than March 2.**

Are you a Federal Pell Grant recipient who also received a Cal Grant A and attends a high school in our local service area?

You may qualify for a financial aid award that only requires you to pay your Estimated Family Contribution (EFC). Grants, scholarships and a subsidized loan (of up to \$3,500) may cover the rest of your tuition.



Step 3: Send additional documents if requested.

If the Financial Aid Office requests any additional documents from you, submit these as soon as possible.

HELPFUL RESOURCES

On-Site Financial Aid Days

The MSMU Admission and Financial Aid Offices host On-Site Financial Aid Days. Admitted students with a completed financial aid file will be invited to attend this opportunity to sit down with a counselor and review their financial aid award line by line.

Outside Scholarships

Any scholarships you are awarded from community organizations and outside sources will help to reduce loans and work study before affecting grants, so you are encouraged to explore options!

Two free online sites to visit: ed.gov ▶ fastweb.com

THE FACE OF UN STOPPABLE

“WITHOUT THE SCHOLARSHIPS AND FINANCIAL AID I RECEIVED, attending the Mount would not have been possible. Thanks to the Dean's Transfer Scholarship, I was able to discover my passion for social justice through film and television. I joined a community of inspiring women in entertainment who believed in me and my vision to create gender parity in film and media. I found my voice, my passion and a start to an amazing career.”

JENNIFER MORGAN '18
Film and Media Major





Mount 
Saint Mary's
University
LOS ANGELES

Office of
Undergraduate Admission
12001 Chalon Road
Los Angeles, CA 90049

LEARN

100%

OF ADMITTED STUDENTS
RECEIVE \$10,000+ IN
MERIT-BASED AWARDS

\$39,882

AVERAGE ANNUAL
AID PACKAGE
2019-2020

You can enjoy the advantages of a small, private liberal arts education at a more affordable cost than you may have imagined. Visit us to learn more about the only women's university in Los Angeles. Feel free to contact us directly or schedule a campus visit.

- ▶ Call: **800.999.9893**
- ▶ Email: **admissions@msmu.edu**
- ▶ Online: **msmu.edu**

-  **facebook.com/MSMUAdmission**
-  **instagram.com/msmu.admission**